



MONTHLY MEMBERSHIP PROGRESS REPORT

District 60 B

Results as of: 3/31/2016

GMT: HARVEY WHITLEY

LOCATION JAMAICA

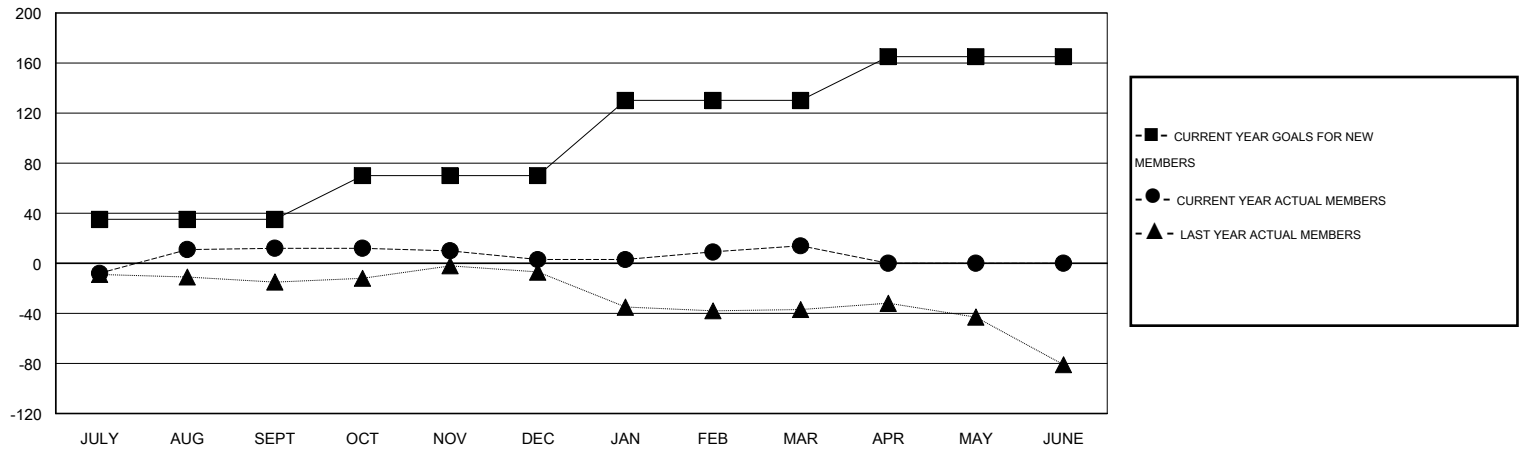
GMT CA 1

| Clubs | | | | | Members | | | | |
|-----------------------|---------------|-----------|---------------|---------------|-----------------------|-----------------|-------------------------------|-----------------|---------------|
| RESULTS FOR 2015-2016 | | | | | RESULTS FOR 2015-2016 | | | | |
| QUARTER | NEW CLUB GOAL | NEW CLUBS | DROPPED CLUBS | NET GAIN/LOSS | QUARTER | NEW MEMBER GOAL | CHARTER AND NEW MEMBERS ADDED | DROPPED MEMBERS | NET GAIN/LOSS |
| JULY/AUG/SEPT | 0 | 0 | 0 | 0 | JULY/AUG/SEPT | 35 | 35 | 23 | 12 |
| OCT/NOV/DEC | 0 | 0 | 0 | 0 | OCT/NOV/DEC | 35 | 24 | 33 | -9 |
| JAN/FEB/MAR | 1 | 0 | 0 | 0 | JAN/FEB/MAR | 60 | 26 | 15 | 11 |
| APR/MAY/JUNE | 0 | 0 | 0 | 0 | APR/MAY/JUNE | 35 | 0 | 0 | 0 |

GOALS AND ACTUAL NEW CLUBS CUMULATIVE



GOALS AND ACTUAL MEMBERS CUMULATIVE



| | | | |
|------------------------|--|---|----------------|
| DROPPED CLUBS: 0 | 29 CLUBS OF 59 ADDED 1 OR MORE NEW MEMBERS | <u>GENDER DISTRIBUTION</u> | |
| | | MALE | 801 (43.53%) |
| <u>DROPPED MEMBERS</u> | | FEMALE | 1,039 (56.47%) |
| DECEASED | 11 | CLICK HERE FOR HEALTH ASSESSMENT DATA | |
| CLUB CANCELLED | 0 | | |
| OTHER | 60 | | |
| TOTAL | 71 | FAMILY UNIT MEMBERS | 47 |
| | | HEAD OF HOUSEHOLD | 23 |
| | | NON-HEAD OF HOUSEHOLD | 24 |